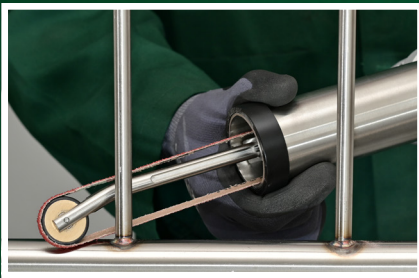


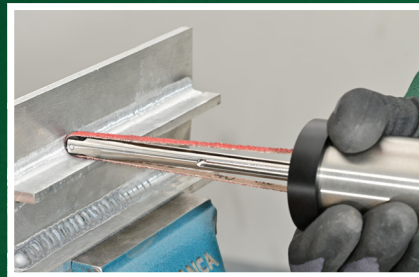
World first

MultiBrax[®] MB 650 BV belt file

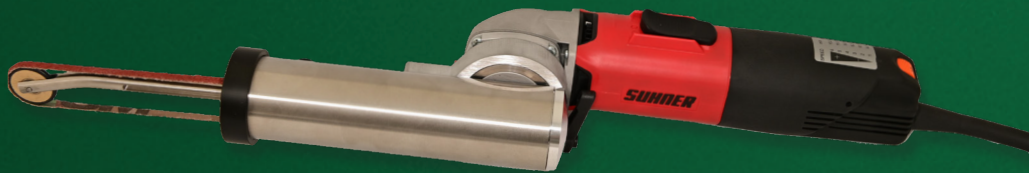
Belt file MB 650 BV



with additional contact arm
for belt file

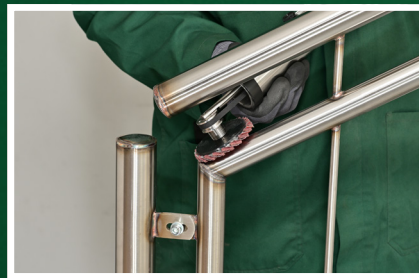


with additional multifunction arm
for extension to
fillet weld and Roloc grinder



Use as fillet weld grinder

with unitized compact disc



Use as Roloc grinder

with non-woven combi disc



Use as Roloc grinder

with nylon brush

— Features

More powerful
compact belt file

- Type: MB 650 BV
- Speed: 3000 – 8200 rpm
- Power consumption: 600 W
- Belt speed: 4,8 – 13,2 m/s
- Weight: 2,60 kg
- For belt dimensions:
6 / 12 / 16 mm
x 520 / 533 / 610 / 650 mm

— Benefits

- The belt length is variable from 520 to 650 mm
- Belt file optionally expandable as fillet weld and Roloc grinder
- Use of standard belt dimensions
(Width: 6-15 mm; Length: 520, 533, 610 und 650 mm)
- The straight belt guide reduces the strain on the belt joints
- Due to the concave and cross knurled drive roller is a centric belt run guaranteed
- A running off of the grinding belt is almost impossible due to the optimal spring tension
- The patented, low multifunctional roll (35 mm) allows working in narrow angles, such as mounted handrails
- The slim design allows working on heavy accessible places, such as fillet welds
- The protective tube over the drive belt offers a higher occupational safety and better handling

— Applications

Versatile application
possibilities in

- Toolmaking
- Mold making
- Mechanical engineering
- Container construction
- Modelling
- Aircraft construction
- Engine construction

MultiBrax® MB 650 BM SET

