

GeBrax[®]

for grinding specialists.

1 main engine = 5 applications

Innovative, versatile grinding possibilities

Efficient grinding system

MultiBrax[®]



One system for all.

The MultiBrax®-Attachment system is compatible with customary inox angle grinders (speed-regulated, 125 mm Ø), compressed air systems and flexible shafts. You can find specific classifications on our homepage or contact us.



The advantages of the MultiBrax® system at a glance:

- Reduction from 5 to 1 main engine (1 main engine + 3 attachments = 5 applications). Usually 5 main engines have to be used: belt grinder, pipe belt grinder, fillet weld grinder, roloc-disc grinder, satin finisher
- Thus lesser costs for acquisition and repairs
- Saving of costs approx. 1,500-2,000,- Euro
- Reduction of machine cases during installation
- Easy assembly, no tools needed
- Versatile fields of application
- Working in narrow angles and hard-to-reach places
- Made and patented in Germany

- No tool chaos
- No lugging of tool boxes
- Working with one single system



- 1 SYSTEM
- 3 ATTACHMENTS
- 5 APPLICATIONS

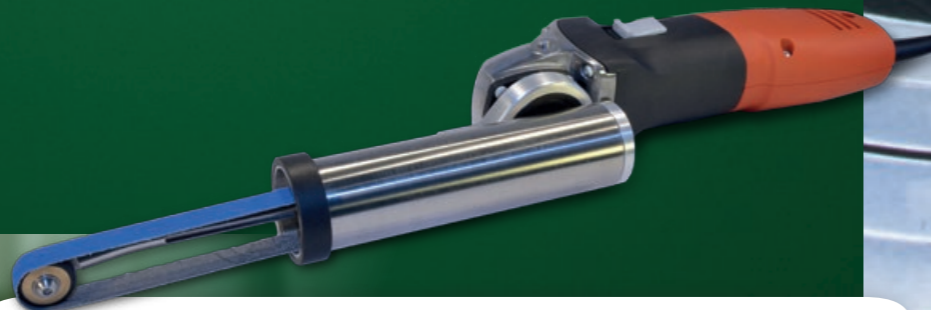
For further information, please visit www.gebrax-abrasives.com



Explore new paths.

Multi-Grinder Attachment MB 650 MV used as Belt Grinder

- Easy assembly, no tools needed
- High-quality, solid and light attachment
- Use of standard belt sizes (width: 6-15 mm, length: 520, 533, 610 and 650 mm)
- The slim design allows working in hard-to-reach places
- Straight belt guide reduces the strain on belt seals
- The protective tube provides a higher work safety and an improved handling
- Thanks to the concave and cross-knurled drive wheel, a central belt run is ensured
- Thanks to the optimal spring tension, it is almost impossible for the grinding belt to come off
- Thanks to the newly developed quick-change system, the contact arm and protective tube are easy to exchange



Benefit from our high stock availability of abrasive and non-woven belts. Our own converting enables us to even supply tailor-made measurements in only a few days.



Multi-Grinder Attachment MB 650 MV used as Fillet Weld Grinder

- Easy assembly, no tools needed
- High-quality, solid and light attachment
- The patented, flat multifunctional roll (35 mm) allows working in narrow angles (e.g. installed hand rails)
- The ball bearing is double-bearred and dust protected
- The slim design in combination with the grouted compact wheels (90 mm Ø) makes it possible to work in hard-to-reach-places (e.g. fillet welds)
- The protective tube provides a higher work safety and an improved handling



With our unitized compact discs it is possible to either remove the welding seam or the annealed colour.



For the perfect grinding.

Multi-Grinder Attachment MB 650 MV used as Roloc-disc Grinder

- Easy assembly, no tools needed
- High-quality, solid and light attachment
- The patented, flat multifunctional roll (35 mm) allows working with roloc-discs and in hard-to-reach places
- Short set-up time thanks to the easy quick-change system
- Wide field of applications: toolmaking, engineering, mould and container construction, modeling, aircraft industry and engine construction
- Thanks to the adapter 00Y25 a direct application on the M14 threaded spindle of the inox angle grinder is possible



Usage of discs with diameters of 19-76 mm. We offer a variety of specifications for the different grinding applications. Available products: ceramic fibre discs, fibre non-woven discs, clean+strip discs, unitized compact discs, non-woven combi discs.



Pipe Belt Grinder MB 650 RV

- Easy assembly, no tools needed
- High-quality, solid and light attachment
- Very easy machining of pipes
- The construction allows grinding in hard-to-reach places such as installed handrails (5 cm clearance to the wall)
- Different belt widths can be used (6-35 mm)
- Dust-protected ball bearings
- Patented guiding rollers
- Thanks to non-rotating side discs on the guiding rollers, the grinding belt is restraint-guided. It is almost impossible for the grinding belt to come off



Thanks to the quality of the grinding belts (J-flex cotton to polyester carrier), combined with belt widths 6-35 mm, all functions can be operated without any difficulty. Also working on the outside curve is no problem, thanks to the guiding rollers (with fixed side discs).



For more flexibility.

Satin Finisher Attachment MB 650 SV

- Adjustable Satin Finishing Attachment
- Easy assembly, no tools needed
- Different sizes of satin finishing rollers (up to 125 mm Ø) can be used
- Revolutionary new mandrel allows a quick and easy exchange of the satin finishing rollers
- The spring tension of the mandrel provides a smooth running
- Mandrel with application for Roloc-discs
- The mandrel is compatible with all customary satin finishing rollers (19 mm; 1-, 2- and 4-notch-systems)
- The at front attached felt Roloc-discs prevent unwanted grinding marks, while working in angles (e.g. angle profile)



TOOL TIP

Shadows or marks on the surface? This unwanted side effect does not have to be. The GeBrax® non-woven rollers are most suitable for the seamless machining on stainless steel surfaces. The colours of the rollers allow an easy classification of the fineness.



MultiBrax® grinding-starter-kits and tool boxes

- A grinding-starter-kit is available to every MultiBrax® Attachment
- All attachments and grinding-starter-kits can be delivered in stackable tool boxes (L-Boxes)
- A wide spread of grinding application is covered with a manageable amount of tools and grinding material



- 1 SYSTEM
- 3 ATTACHMENTS
- 5 APPLICATIONS

Curious? You are welcome to visit us in Freudenberg to convince yourself of our grinding converting with the quality-standard „Made in Germany“.

We will show you the performance of GeBrax® products in our training area. The practical and realistic applications with the MultiBrax® system show you new and multifunctional grinding possibilities. We look forward to your visit!

**GeBrax® – for grinding specialists.
For you.**

MultiBrax®



GeBrax GmbH

Obere Hommeswiese 41 – 45
57258 Freudenberg
Germany

Phone: +49 27 34 / 28 474-0
Telefax: +49 27 34 / 28 474-10
E-Mail: info@gebrax.de

www.gebrax-abrasives.com